

Summative assessment:

The summative assessment that takes place at Chard School includes:

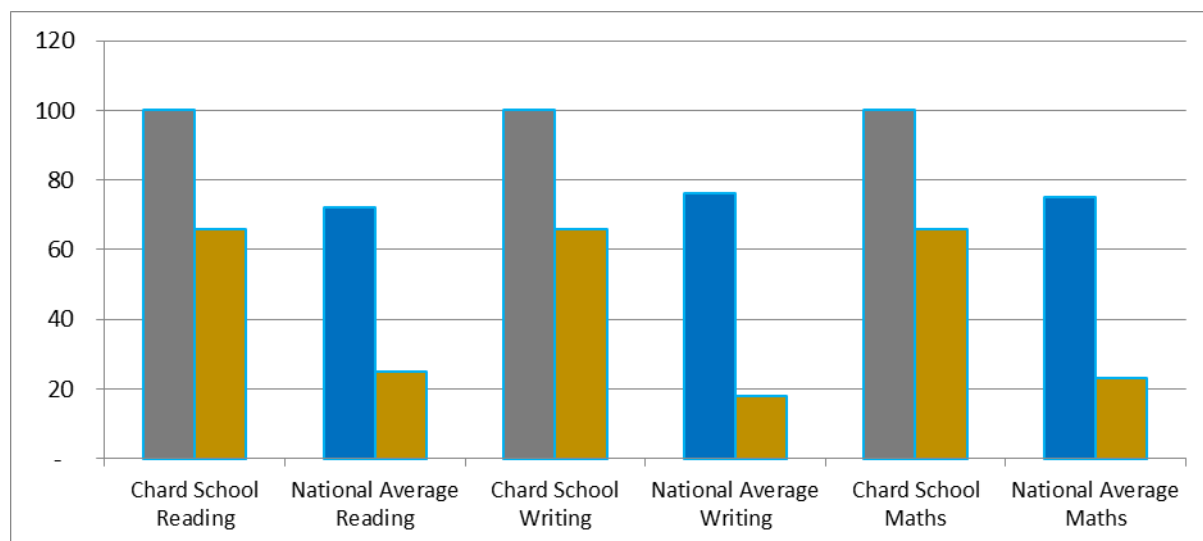
- NFER Cognitive ability tests (October: Year 3+)
- Reading and Spelling age assessments (September/July: Year 3 +)
- GL Assessment progress tests in Maths, English and Science (June: Year R +)
- GL Baseline assessment (September: Year R)

These results, alongside teacher assessment, are used to inform our decisions when assessing children during and at the end of each year. The results of these summative assessments are tracked and monitored at three separate points during the year, where decisions are made about each child's provision.

End of year 6 assessment results against the National average

	% of Chard School students meeting end of year 6 expectations
	% of children nationally meeting end of year 6 expectations
	% of children exceeding expectations and working at a 'greater depth'.

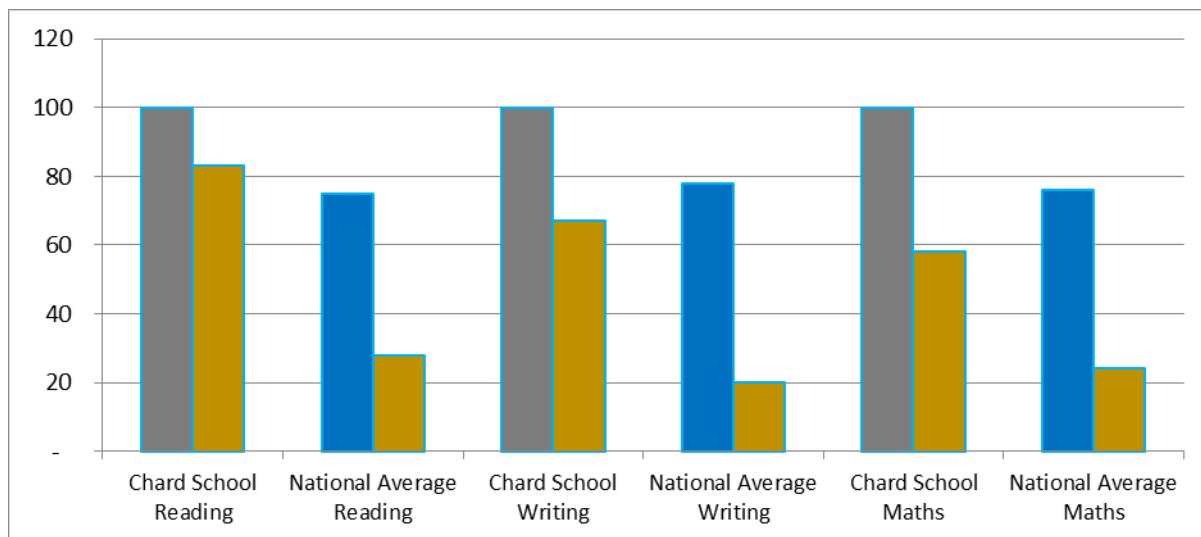
2016/17



2016-2017	Meeting expected standards	Working beyond expected standards		Meeting expected standards	Working beyond expected standards		Meeting expected standards	Working beyond expected standards
Chard School Reading	100	66	Chard School Writing	100	66	Chard School Maths	100	66
National Average Reading	72	25	National Average Writing	76	18	National Average Maths	75	23

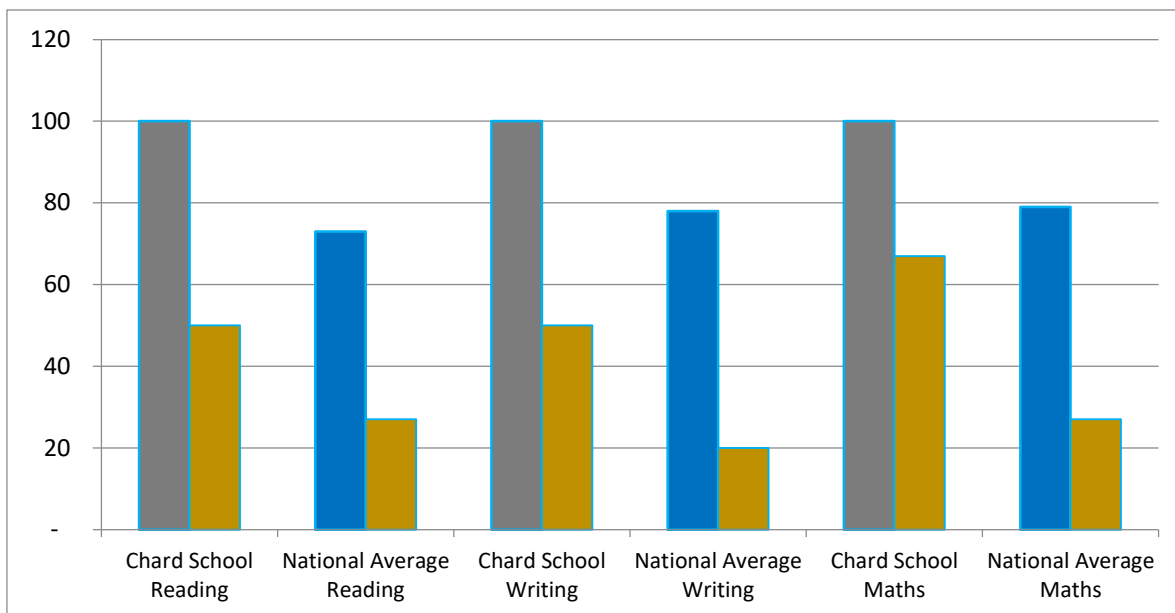
2017/18

	% of Chard School students meeting end of year 6 expectations
	% of children nationally meeting end of year 6 expectations
	% of children exceeding expectations and working at a 'greater depth'.



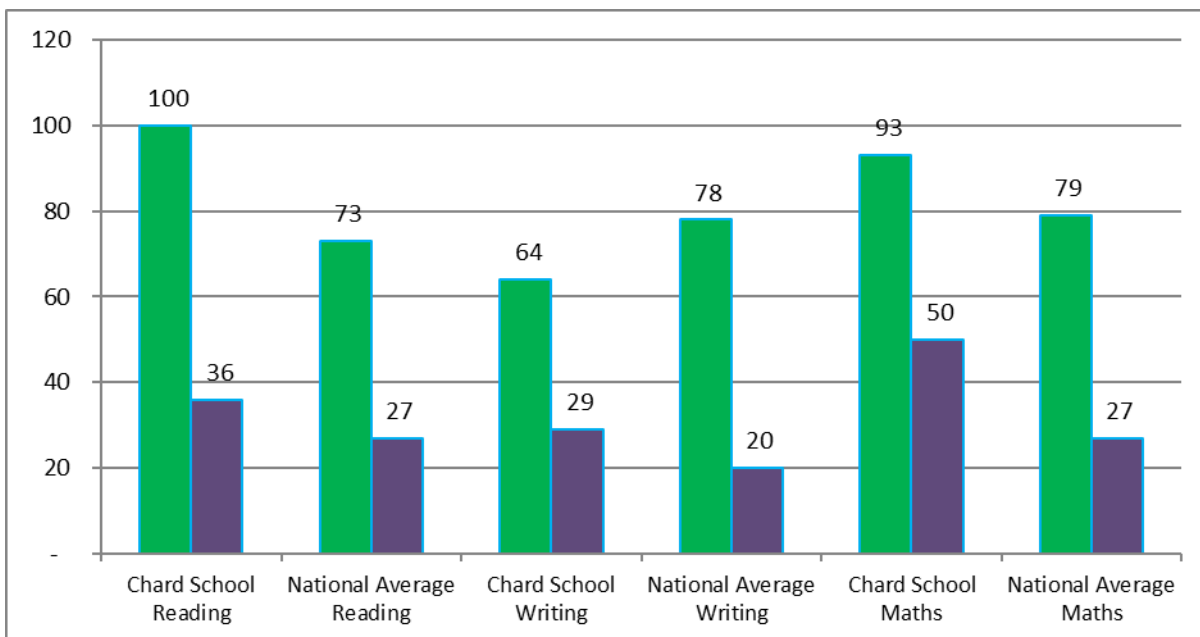
2017-18	Meeting expected standards	Working beyond expected standards		Meeting expected standards	Working beyond expected standards		Meeting expected standards	Working beyond expected standards
	Chard School Reading	100	83	Chard School Writing	100	67	Chard School Maths	100
National Average Reading	75	28	National Average Writing	78	20	National Average Maths	76	24

	% of Chard School students meeting end of year 6 expectations
	% of children nationally meeting end of year 6 expectations
	% of children exceeding expectations and working at a 'greater depth'.



2018-19	Meeting expected standards	Working beyond expected standards		Meeting expected standards	Working beyond expected standards		Meeting expected standards	Working beyond expected standards
Chard School Reading	100	50	Chard School Writing	100	50	Chard School Maths	100	67
National Average Reading	73	27	National Average Writing	78	20	National Average Maths	79	27

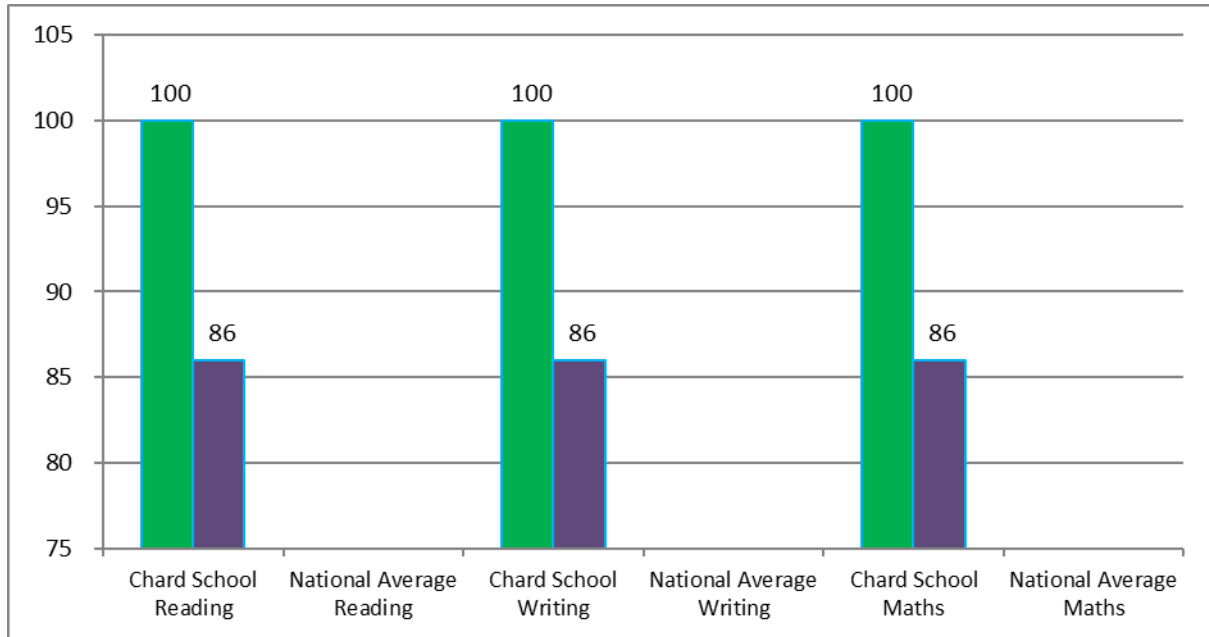
Working at Expected level	
Working at Greater depth level	



2019-20	Meeting expected standards	Working beyond expected standards		Meeting expected standards	Working beyond expected standards		Meeting expected standards	Working beyond expected standards
	Chard School Reading	100	36	Chard School Writing	64	29	Chard School Maths	93
National Average Reading	73	27	National Average Writing	78	20	National Average Maths	50	27

2020/21

Working at Expected level	
Working at Greater depth level	

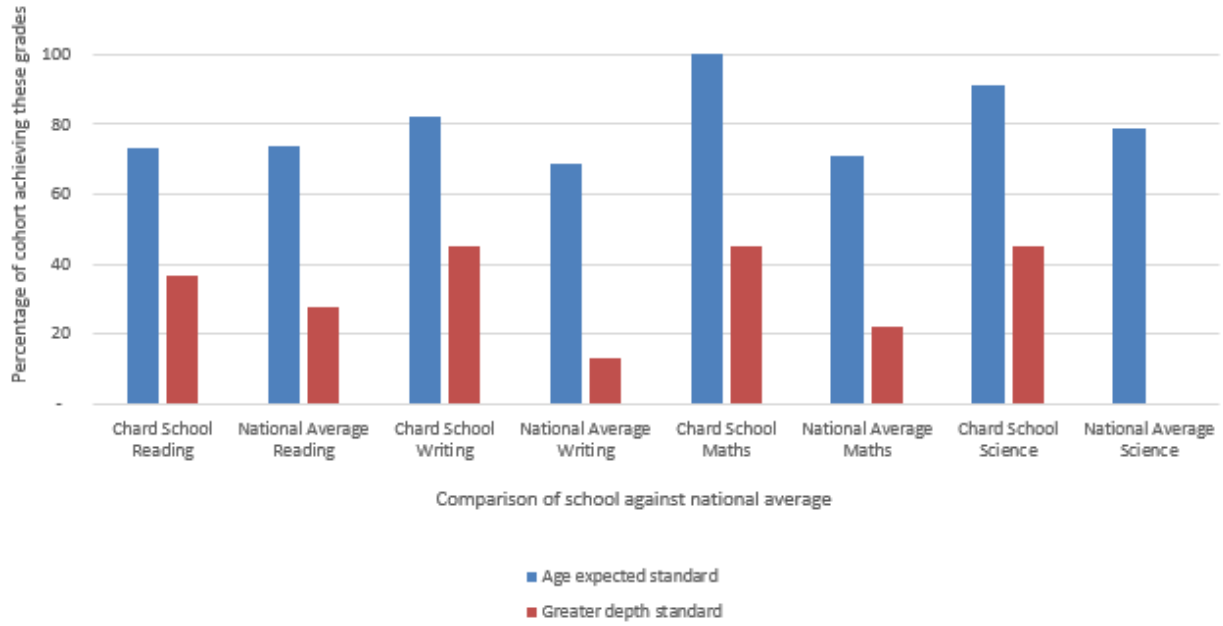


2020-21	Meeting expected standards	Working beyond expected standards		Meeting expected standards	Working beyond expected standards		Meeting expected standards	Working beyond expected standards
Chard School Reading	100	86	Chard School Writing	100	86	Chard School Maths	100	86
National Average Reading			National Average Writing			National Average Maths		

NOTE: No National Average given due to COVID meaning school results were not published.

2021/22

Working at Expected level
 Working at Greater depth level



2021-22	Meeting expected standards		Working beyond expected standards		Meeting expected standards		Working beyond expected standards		Meeting expected standards	
	Meeting expected standards	Working beyond expected standards	Meeting expected standards	Working beyond expected standards	Meeting expected standards	Working beyond expected standards	Meeting expected standards	Working beyond expected standards	Meeting expected standards	
Chard School Reading	73	37	Chard School Writing	82	45	Chard School Maths	100	45	Chard School Science	91
National Average Reading	74	28	National Average Writing	69	13	National Average Maths	71	22	National Average Science	79